

12 years warranty

REYNOARCH[®]
ACP | HPL

REYNOARCH[®]
ACP | HPL

REYNOBOND INDIA

HEAD OFFICE
2E/7, Jhandewalan Extension, New Delhi, India 110055
Web : www.reynobondindia.com Email : info@reynobondindia.com

CUSTOMER CARE
+91 9810846953, 011-42307700

BRANCHES

| | | |
|--------------------------|------------------------|---------------------|
| AHMEDABAD : 7428796915 | HYDERABAD : 9311733236 | NOIDA : 9311811653 |
| BANGALORE : 9311733237 | HUBLI : 9311733241 | PATNA : 9311622662 |
| BHUBANESWAR : 9311622660 | INDORE : 9311811650 | PUNE : 7428090120 |
| CHENNAI : 9311733233 | JAIPUR : 7428090125 | RAIPUR : 9319088575 |
| DELHI : 7428796919 | KOCHI : 9311733248 | RANCHI : 9006416500 |
| GURUGRAM : 9319088569 | KOLKATA : 7428697590 | |
| GUWAHATI : 9289901740 | LUCKNOW : 7428586872 | |

Channel Partner



DEC - 2023

A PRODUCT OF
REYNOBOND INDIA

“create with a heart
built with a mind”



12 years warranty

REYNOARCH®

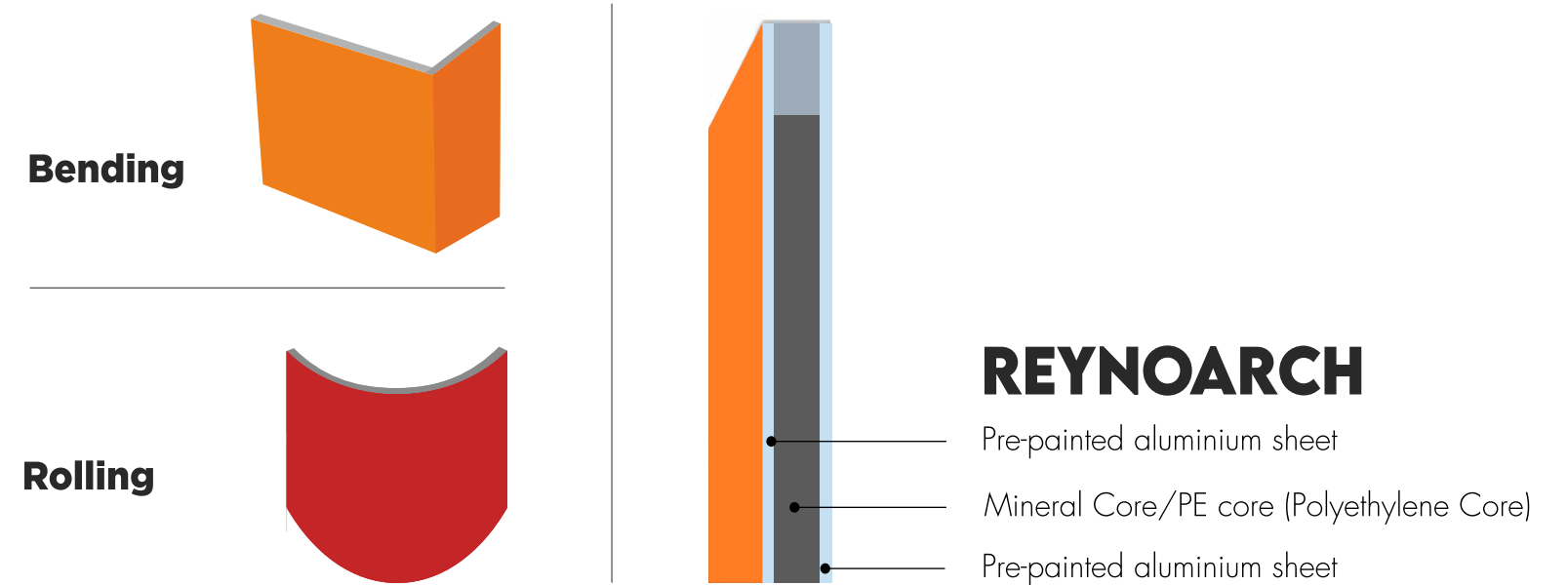
ACP | HPL

Reynoarch composite panels and high pressure ACP consist of two coated aluminium sheets that are laminated to both sides of a PE Core/Mineral Core Flatness, lightweight, minimal expansion, high corrosion and weather resistance are some of the advantages that make it an outstanding product. Please ask for the product datasheet for more information.

VERSATILE AND EASY TO FABRICATE.

Reynoarch panels and sheets enable flexibility in fabrication allowing freedom in design for unusual shapes

FABRICATION



ADVANTAGES:

• Products:

- ✓ Cost-effective: easy and quick installation and maintenance
- ✓ Highly UV and weather resistant
- ✓ Warranty up to 12 years
- ✓ Easy to fabricate and bend: freedom in design for unusual shapes

SEE THE SPECTRUM OF
POSSIBILITIES

FLATNESS:

Excellent flatness derived from the continuous laminating process



COLOR UNIFORMITY:

The coil coating process ensures complete color consistency



RIGIDITY:

Reynoarch is rigid and light weight



WORKABILITY:

Easy to process with ordinary fabrication machines and tools



ECOLOGY:

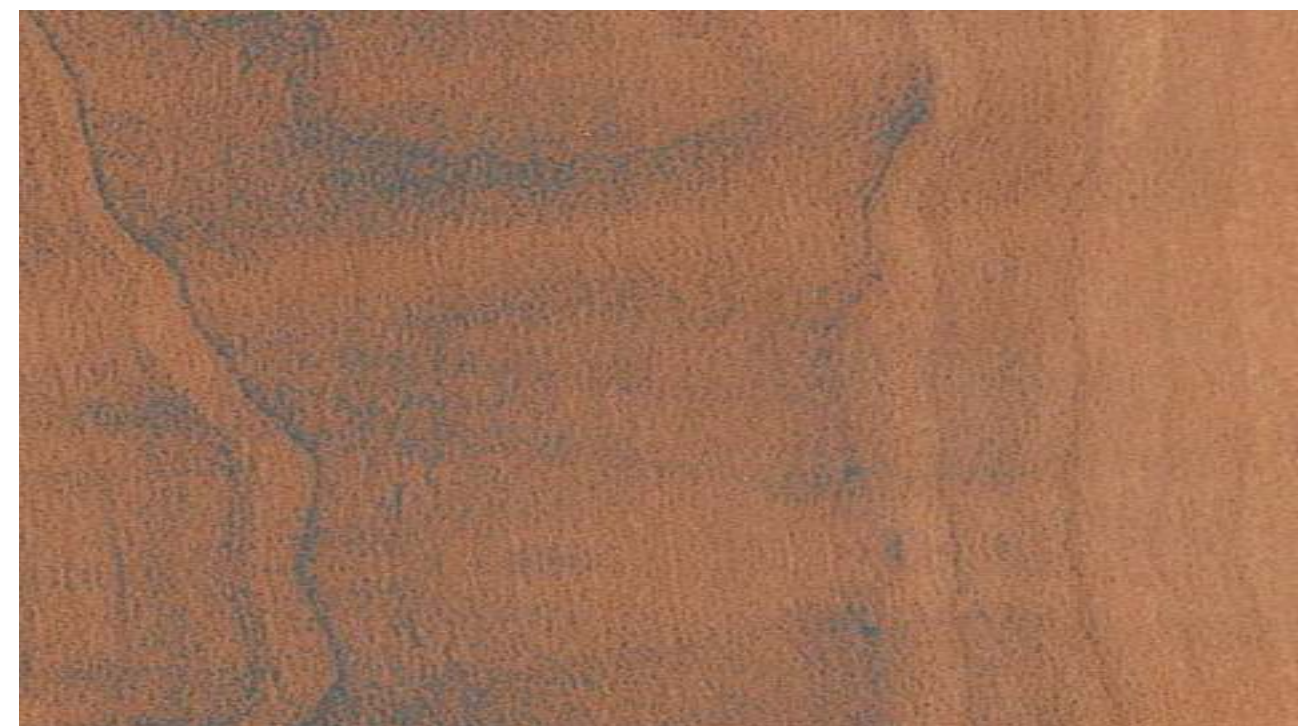
Reynoarch and environmentally friendly



RA - 154 Novacentopine | HPL



RA - 116 Royal Teak | HPL

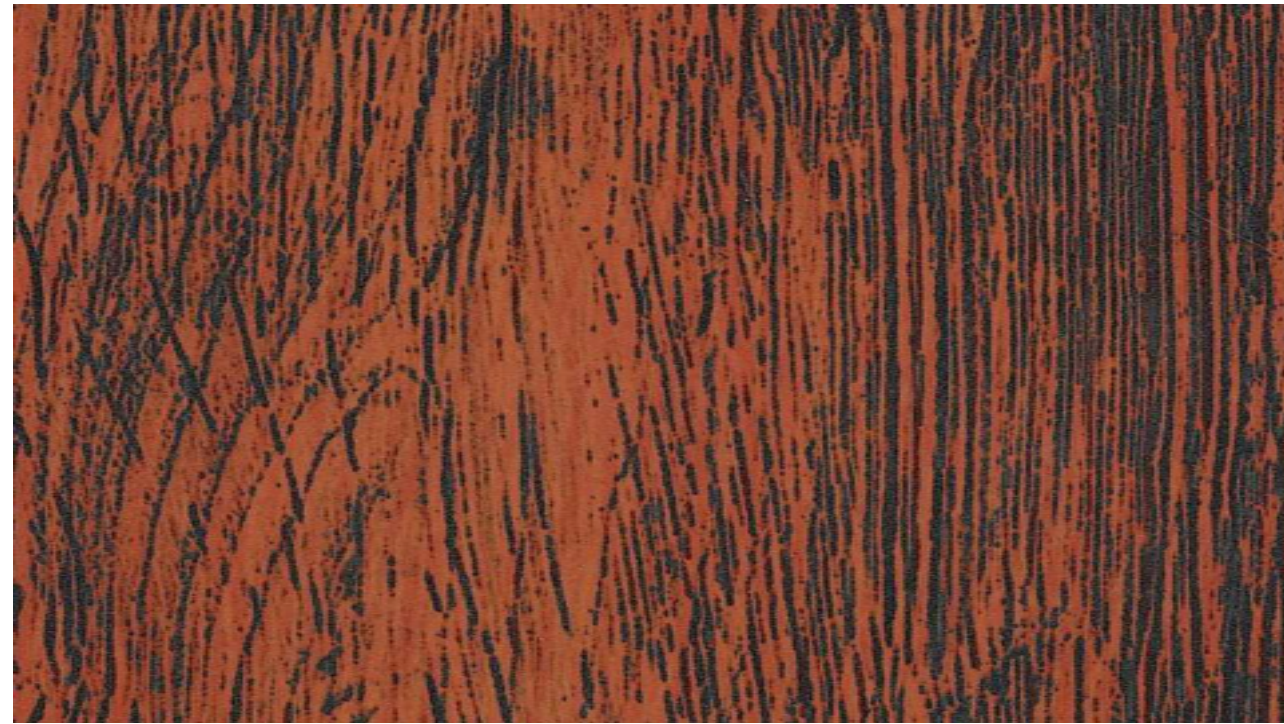


RA - 134 Teak Gold | HPL

Sheet Thickness: 3mm 4mm 6mm



RA - 118 Dark Teak | HPL



RA - 129 Tiger Wood | HPL



RA - 143 Classic Walnut | HPL

Sheet Thickness: 3mm 4mm 6mm



RA - 146 Brown Duglus | HPL



RA - 100 Oxford Cherry | HPL



RA - 102 Okwood | HPL

Sheet Thickness: 3mm 4mm 6mm





RA - 148 Fusion Walnut | HPL



RA - 151 Nyana Teak | HPL



RA - 110 Burn Walnut | HPL



RA - 111 Louropreto | HPL



RA - 131 Flowery Wenge | HPL



RA - 132 Straight Grained Wenge | HPL



RA - 117 Satin Wood | HPL



RA - 130 Rustic Wood | HPL



RA - 133 Choco Crush Line | HPL



RA - 135 Zebra Oak | HPL

Sheet Thickness: 3mm 4mm 6mm

Sheet Thickness: 3mm 4mm 6mm



RA - 101 Wenge | HPL



RA - 112 Tineo | HPL



RA - 136 Soil Oak | HPL



RA - 137 German Oak | HPL



RA - 144 Zebra Wood | HPL



RA - 145 African Walnut | HPL



RA - 140 Safari Wood | HPL



RA - 142 American Walnut | HPL

Sheet Thickness: 3mm 4mm 6mm

Sheet Thickness: 3mm 4mm 6mm





RA - 141 Chocolate Zebrano | HPL



RA - 147 Dark Oak | HPL



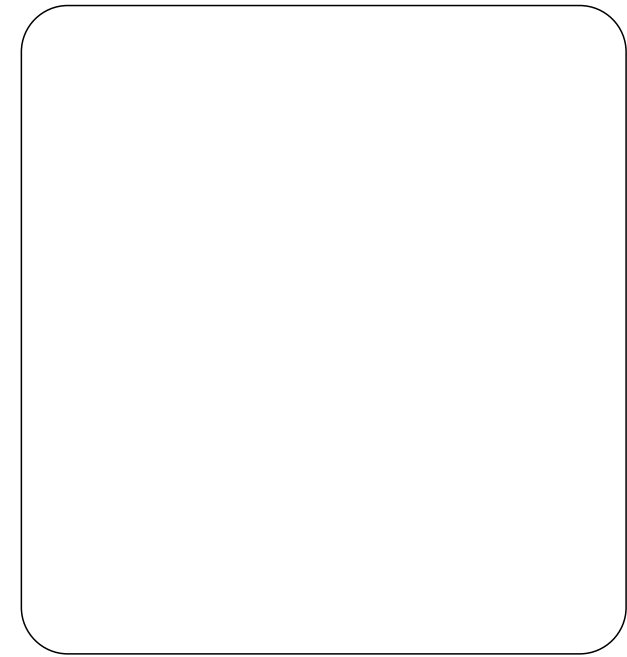
RA - 149 White Oak Fusion | HPL



RA - 150 Wintry Ash | HPL



RA - 182 Statuario Marble | HPL



Sheet Thickness: 3mm 4mm 6mm



RA - 152 Natural Mahogany | HP



RA - 153 Rosewood | HPL

Sheet Thickness: 3mm 4mm 6mm





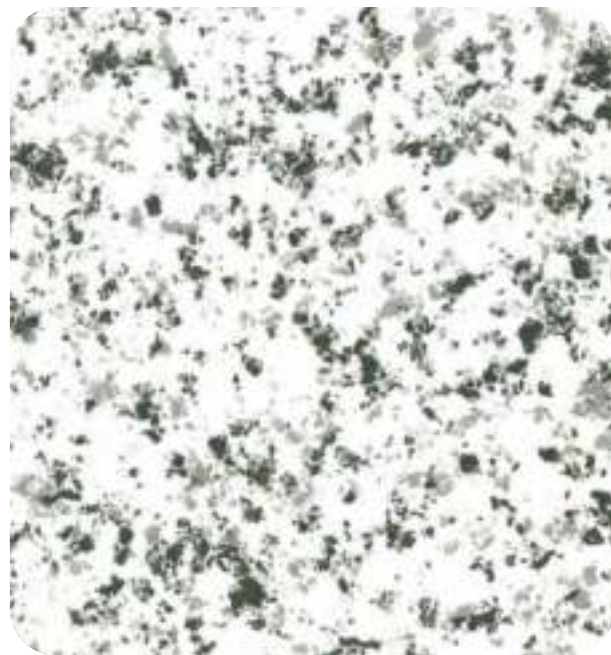
RA - 119 Perlato | HPL



RA - 105 Emperador | HPL



RA - 106 Granville | HPL



RA - 108 Quartz Ivory | HPL



RA - 109 Venziano Granite | HPL

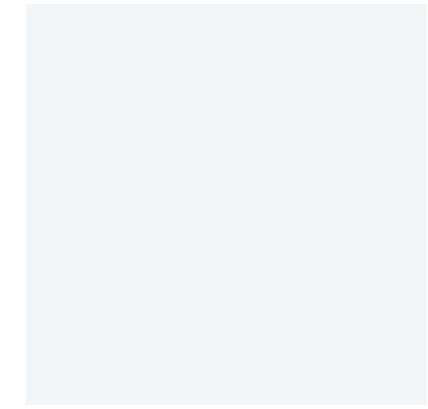
Sheet Thickness: 3mm 4mm 6mm



RA - 01** Signal Red



RA - 03* Orange



RA - 08** Bright White



RA - 10** Ivory White



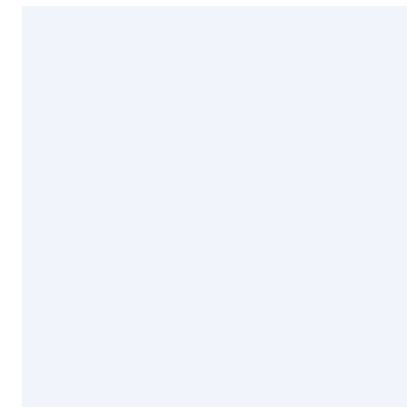
RA - 11** Dark Blue



RA - 19** Coal Black



RA - 02* Yellow



RA - 47* Pure White



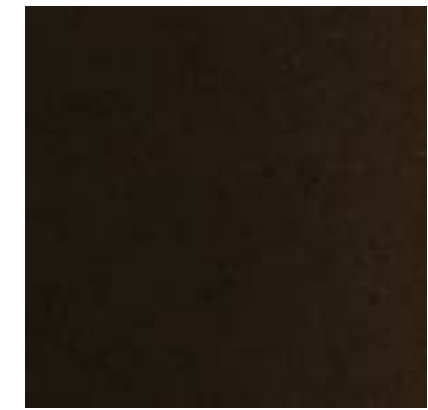
RA - 26* Brick Red



RA - 30* Choco Brown



RA - 12* Light Blue



RA - 31* Coffee Silver

Sheet Thickness: 3mm 4mm 6mm
Coil Thickness: *0.25, **0.25 & 0.50, ***0.50



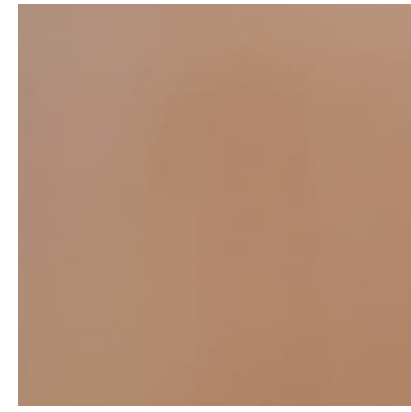
RA - 16* Lilac



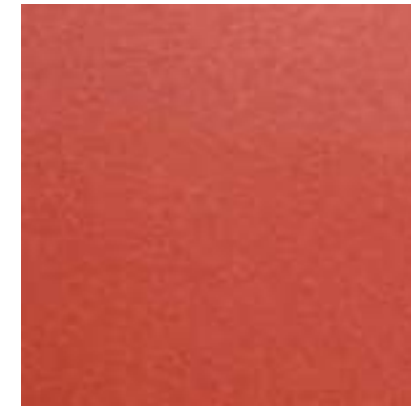
RA - 44* Dark Grey



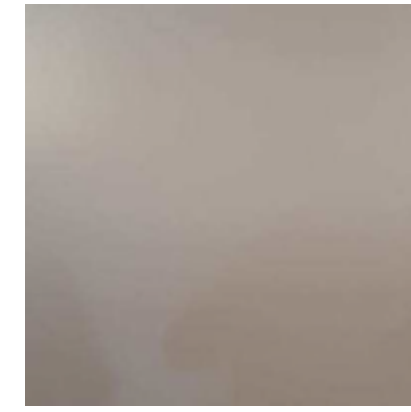
RA - 25* Traffic Yellow



RA - 24* Magic Gold



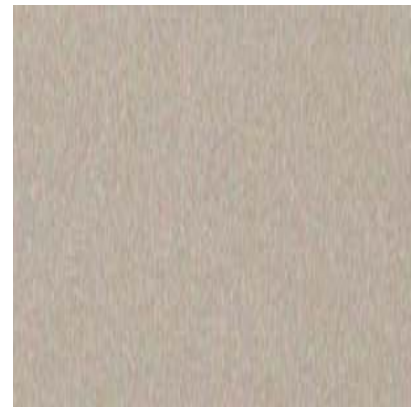
RA - 27* Wine Metallic



RA - 29* Rose Metallic



RA - 04** Bright Silver



RA - 06** Champagne Gold



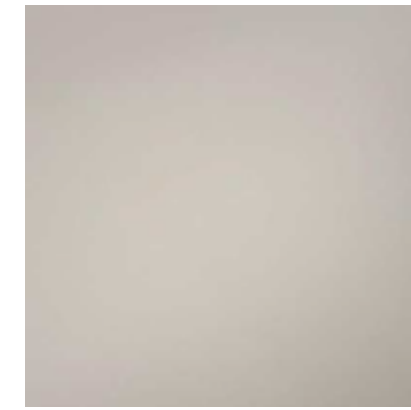
RA - 13** Blue Silver



RA - 55* Egg White



RA - 56* Gun Metallic Grey



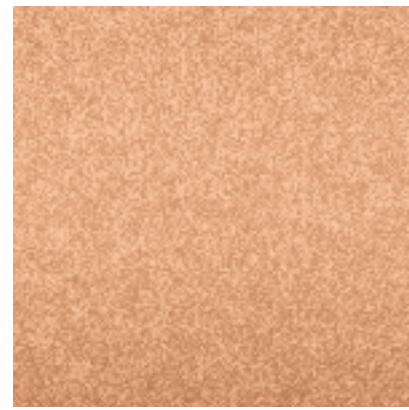
RA - 57* Dholpur Beige



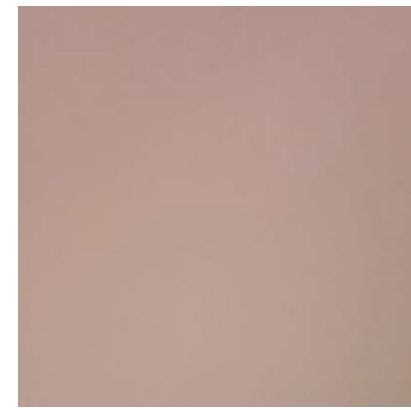
RA - 21** Jade Metallic



RA - 14** Black Silver



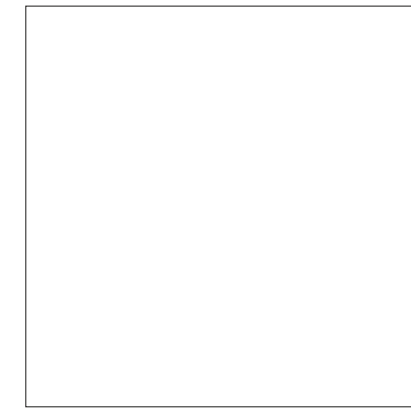
RA - 15** Copper Metallic



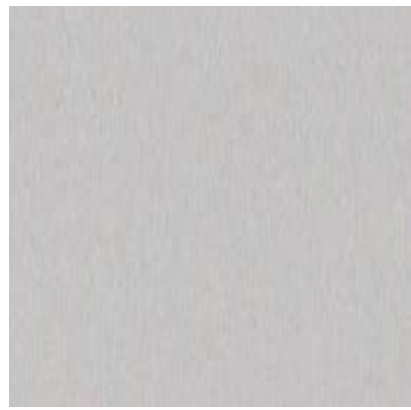
RA - 58* Dholpur Red



RA - 60*** Terracotta Red



Coming Soon



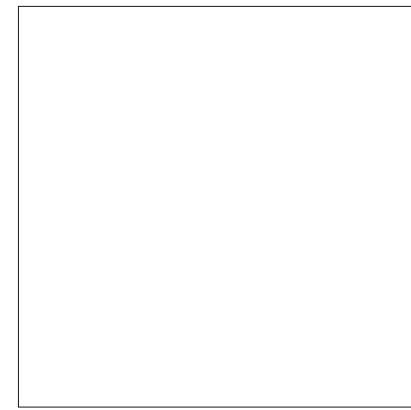
RA - 07** Metallic Silver



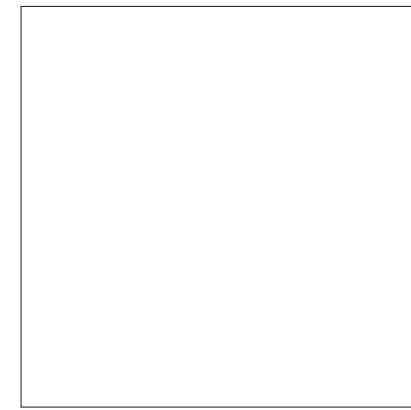
RA - 20* Metallic Bronze



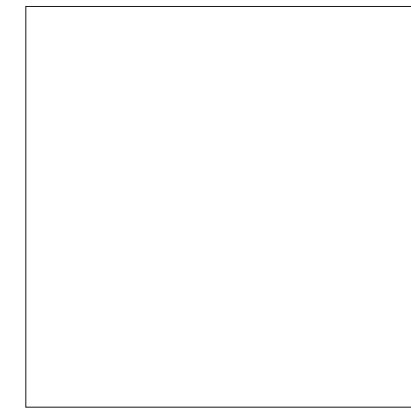
RA - 22** Super Gold



Coming Soon



Coming Soon



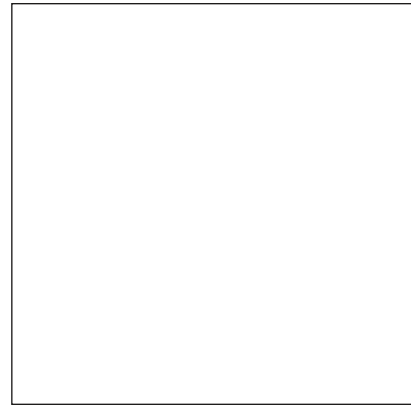
Coming Soon

Sheet Thickness: ■ 3mm ■ 4mm ■ 6mm
 Coil Thickness: *0.25, **0.25 & 0.50, ***0.50

Sheet Thickness: ■ 3mm ■ 4mm ■ 6mm
 Coil Thickness: *0.25, **0.25 & 0.50, ***0.50



RA - 48* Glossy Red



RA - 33* Glossy White



RA - 50* Glossy Black



RA - 17 Brush Silver (Interior)



RA - 09 Silver Mirror(Interior)



RA - 35 Golden Mirror(Interior)

Sheet Thickness: 3mm 4mm 6mm
 Coil Thickness: *0.25, **0.25 & 0.50, ***0.50



OUR PRODUCT RANGE

Facade Composite Panel



Aluminium Composite Panels



High Pressure Laminates



Fire Barrier A2 ACP



ACP Louvers



Honeycomb Composite Panels

ReynoArch CC

REYNOARCH
CONSTRUCTION CHEMICAL

TILE ADHESIVE & TILE GROUT



EPOXY GROUT



TILE GROUT



READYMIX PLASTER, BLOCK JOINING MORTAR, ADMIX