



A2

Non-Combustible
Composite Panels

FR

Fire-Retardant
Composite Panels

Let your boldest
visions become
reality

REYNOBOND®
COMPOSITE PANELS



15 year warranty

REYNOBOND®

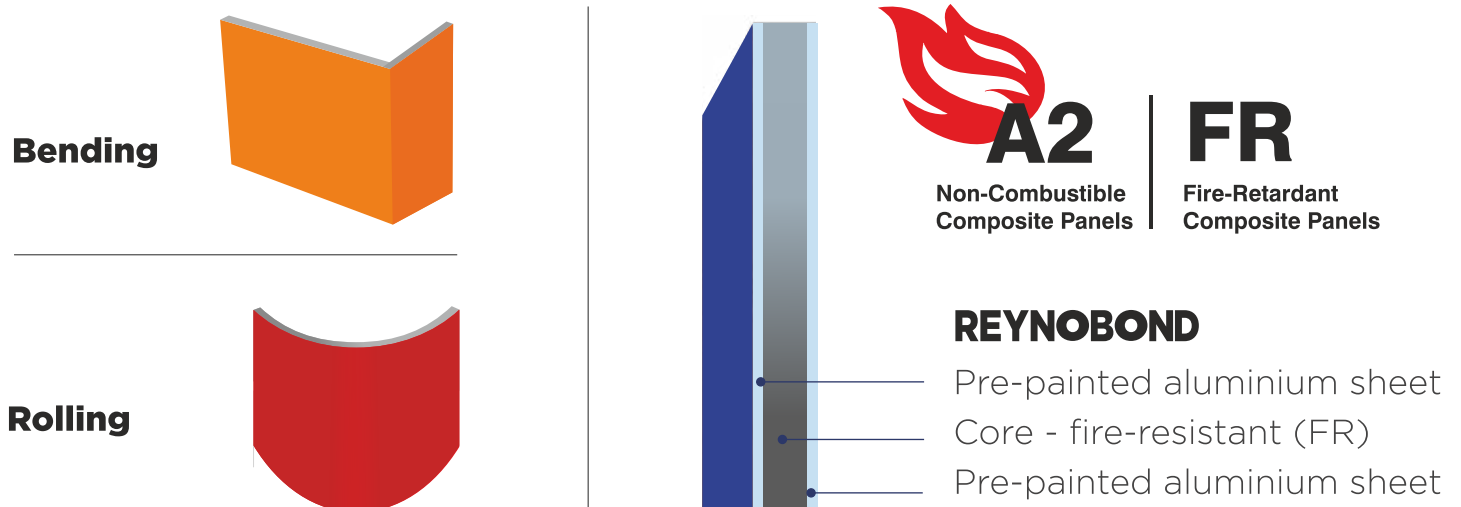
COMPOSITE PANELS

Reynobond® composite panels consist of two coated aluminium sheets that are laminated to both sides of a PE Core / fire-resistant (FR) core. Flatness, lightweight, minimal expansion, high corrosion and weather resistance are some of the advantages that make it an outstanding product. Please ask for the product datasheet for more information.

VERSATILE AND EASY TO FABRICATE.

Reynobond® panels and sheets enable flexibility in fabrication allowing freedom in design for unusual shapes.

FABRICATION



ADVANTAGES:

• Products:

- ✓ Cost-effective: easy and quick installation and maintenance
- ✓ Highly UV and weather resistant
- ✓ Warranty up to 15 years
- ✓ Easy to fabricate and bend: freedom in design for unusual shapes

• Service:

- ✓ In widths up to 48 in and lengths up to 144 in
- ✓ Flexible and short lead times for standard stocking items





REYNOBOND®
COMPOSITE PANELS



FR
Fire-Retardant
Composite Panels

Good resistance to corrosion, UV and weathering, flexibility required for fabrication, and a wide range of colors are some of the advantages offered by us. Reynobond® composite panels come with a 15 year warranty

Wide Range of Colors.

You can find all standard finishes in our color chart. We have colors ranging from Plain, Solid, Sparkle Color, Wooden, Marble, sand and much more to experience Real Exuberance.

For architects and builders, few things are more important than the successful execution of a bold design. That's why so many rely on Reynobond® composite material to amplify the impact of their ideas. Our lightweight, formable and colorful coil-coated finishes are available in both standard and custom finish options—opening up a world of possibilities for even your most ambitious concepts. Dramatic curves, daring angles and unique shapes come to life with eye-catching appeal and superior performance. Add easy maintenance with up to a 15-year warranty and you have a design solution that can go as far as your specifications and imagination—require.

SEE THE SPECTRUM OF

POSSIBILITIES

FLATNESS:

Excellent flatness derived from the continuous laminating process



COLOR UNIFORMITY:

The coil coating process ensures complete color consistency



RIGIDITY:

Reynobond® is rigid and light weight



FIRE SAFETY:

With its non-combustible high mineral-filled core Reynobond® has been ranked up to class A2 which is one highest fire-safety grade in accordance with European Norm (EN) standard.



WORKABILITY:

Easy to process with ordinary fabrication machines and tools



ECOLOGY:

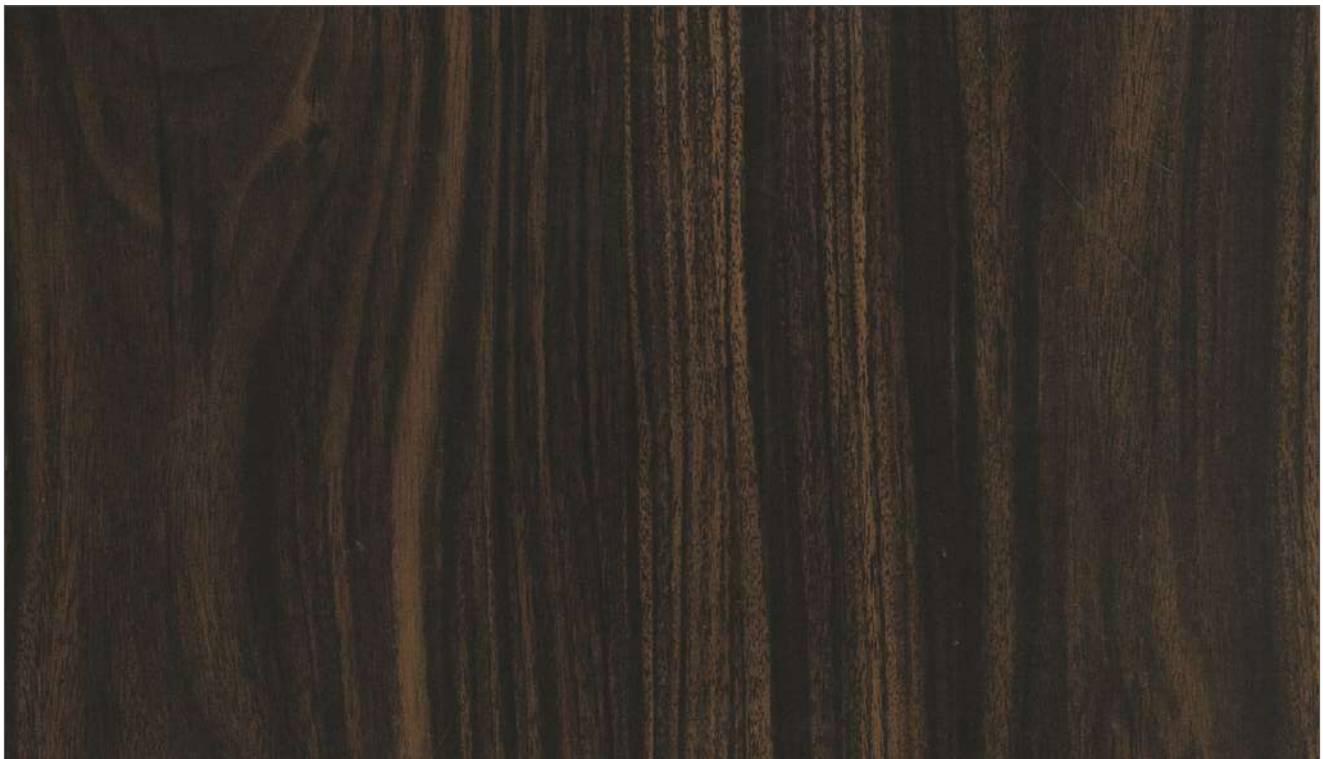
Reynobond® and environmentally friendly



REYNOBOND WOODEN SERIES



RB - 100 Oxford Cherry



RB - 101 Wenge

15 year
warranty

Sheet Thickness:
3mm, 4mm & 6mm | Coil Thickness:
0.25mm



RB - 102 Oakwood



RB - 110 Burn Walnut

REYNOBOND WOODEN SERIES



RB - III Louro preto



RB - II2 Tineo

15 year
warranty

Sheet Thickness:
3mm, 4mm & 6mm | Coil Thickness:
0.25mm



RB - 118 Dark Teak



RB - 117 Satin Wood

REYNOBOND WOODEN SERIES



RB - 129 Tiger Wood



RB - 130 Rustic Wood

15 year
warranty

Sheet Thickness: 3mm, 4mm & 6mm | Coil Thickness: 0.25mm



RB - 131 Flowery Wenge

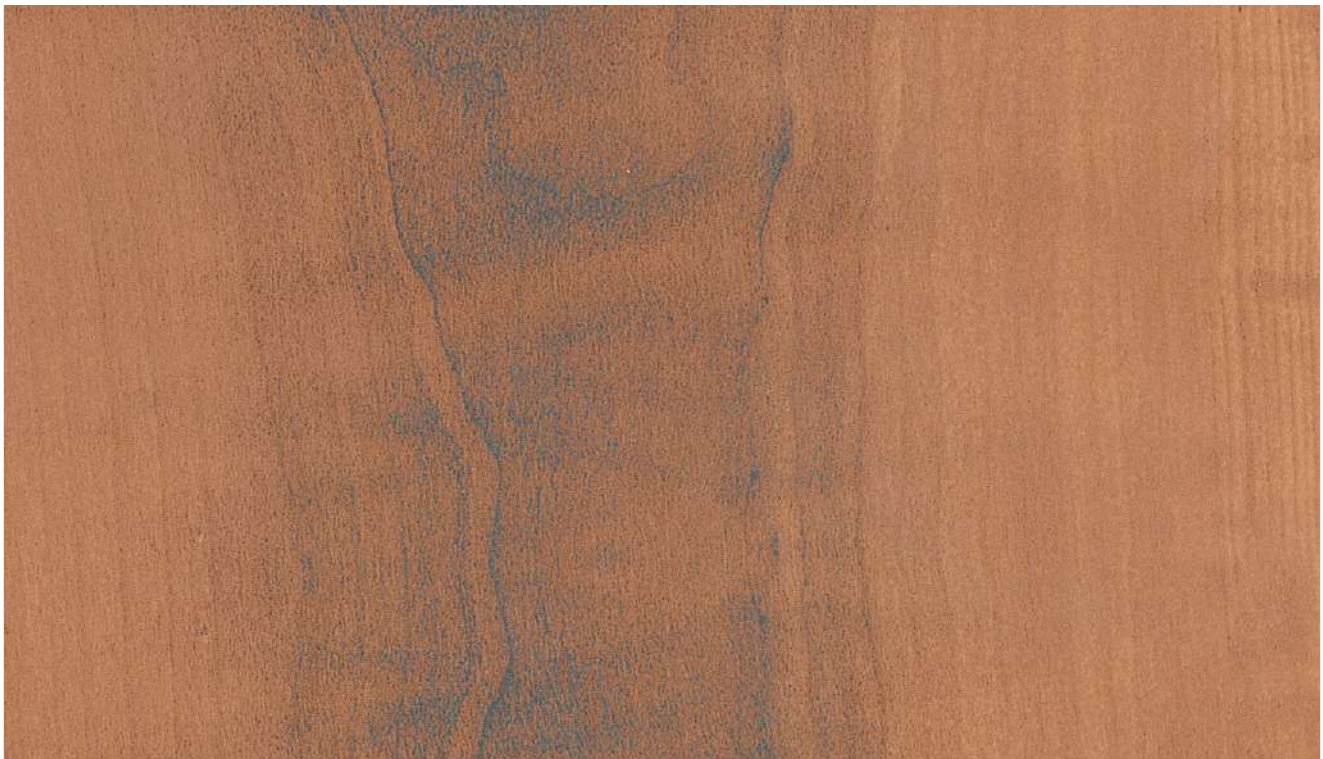


RB - 132 Straight Grained Wenge

REYNOBOND WOODEN SERIES



RB - 133 Choco Crush Line



RB - 134 Teak Gold

15 year
warranty

Sheet Thickness:
3mm, 4mm & 6mm | Coil Thickness:
0.25mm



RB - I35 Zebra Oak



RB - I36 Soil Oak

REYNOBOND WOODEN SERIES



RB - I37 German Oak



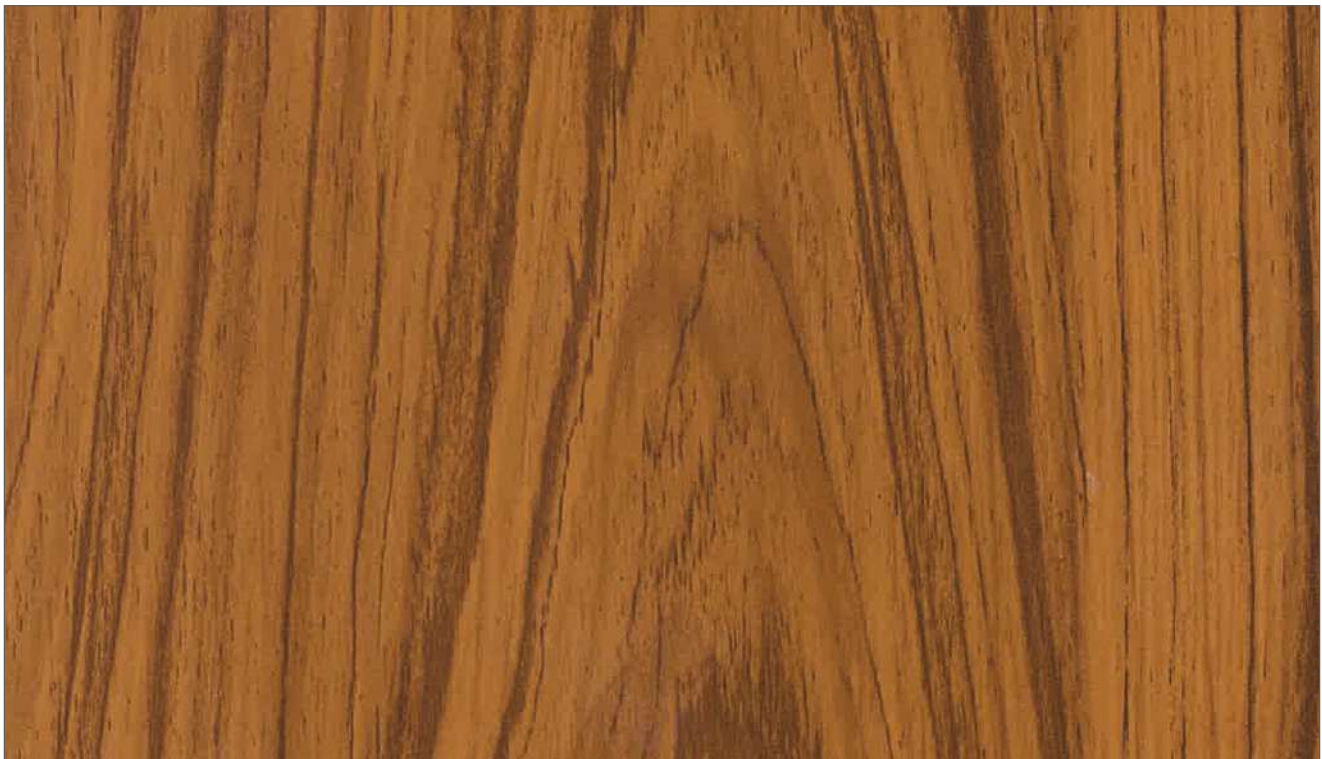
RB - I40 Safari Wood

15 year
warranty

Sheet Thickness:
3mm, 4mm & 6mm | Coil Thickness:
0.25mm



RB - I41 Chocolate Zebrano



RB - I42 American Walnut

REYNOBOND WOODEN SERIES



RB - 143 Classic Walnut



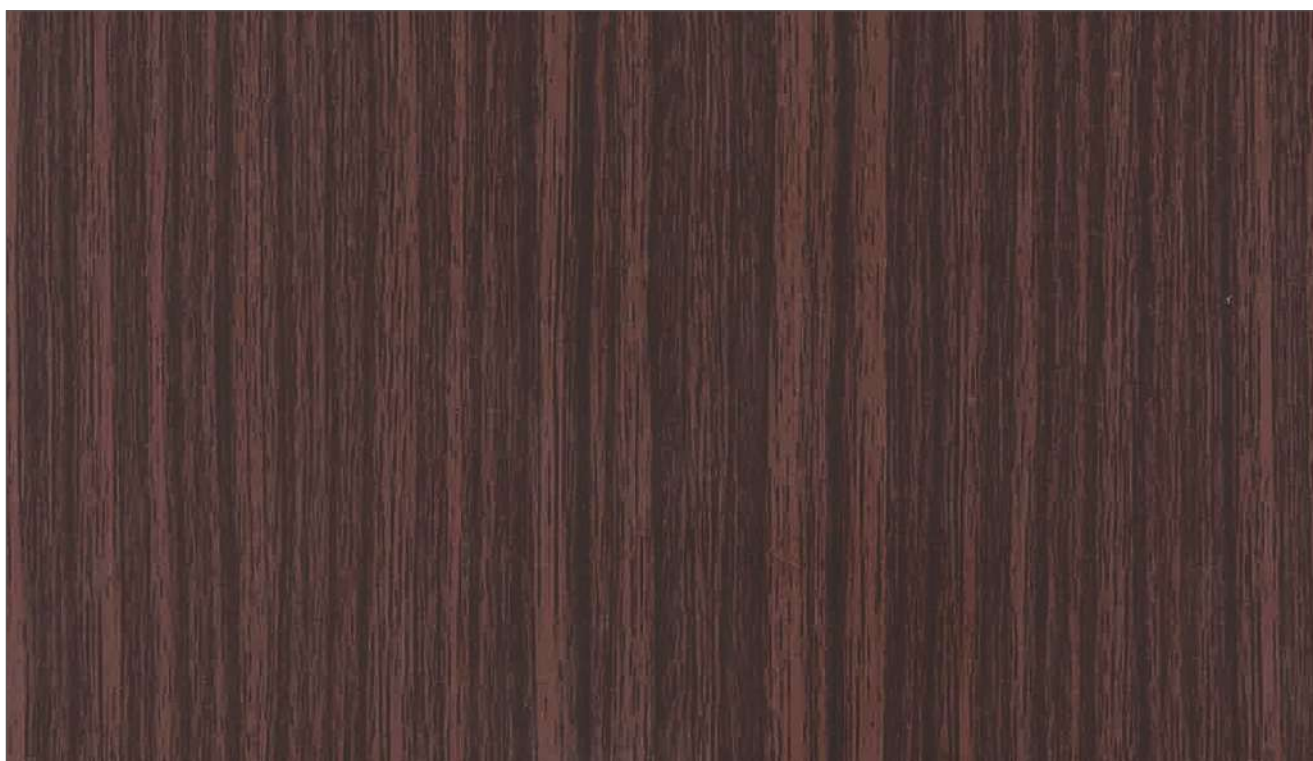
RB - 144 Zebra Wood

15 year
warranty

Sheet Thickness:
3mm, 4mm & 6mm | Coil Thickness:
0.25mm



RB - I45 African Walnut



RB - I46 Brown Douglas

REYNOBOND WOODEN SERIES



RB - I47 Dark Oak



RB - I48 Fusion Walnut

15 year
warranty

Sheet Thickness:
3mm, 4mm & 6mm | Coil Thickness:
0.25mm



RB - I49 White Oak Fusion

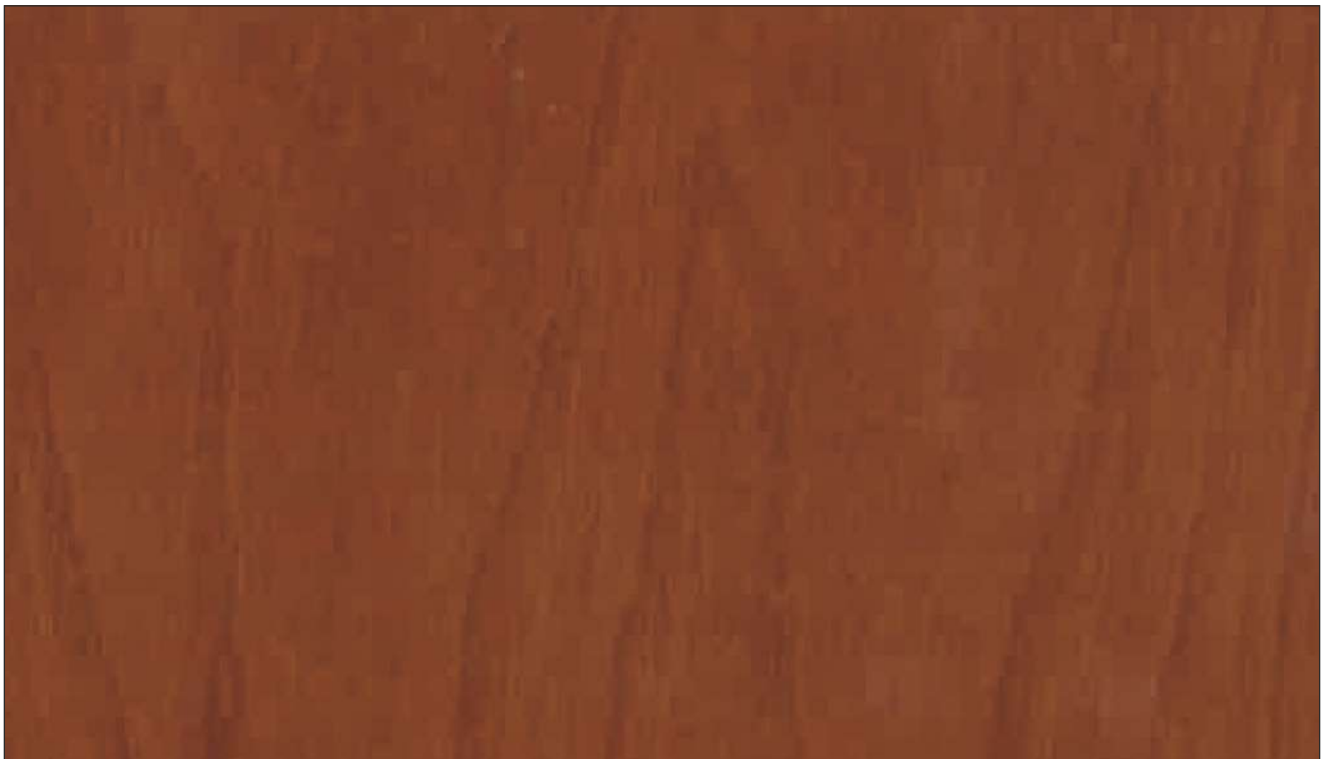


RB - I50 Wintry Ash

REYNOBOND WOODEN SERIES



RB - 151 Nyana Teak



RB - 152 Natural Mahogany

15 year
warranty

Sheet Thickness:
3mm, 4mm & 6mm | Coil Thickness:
0.25mm



RB - 153 Rosewood

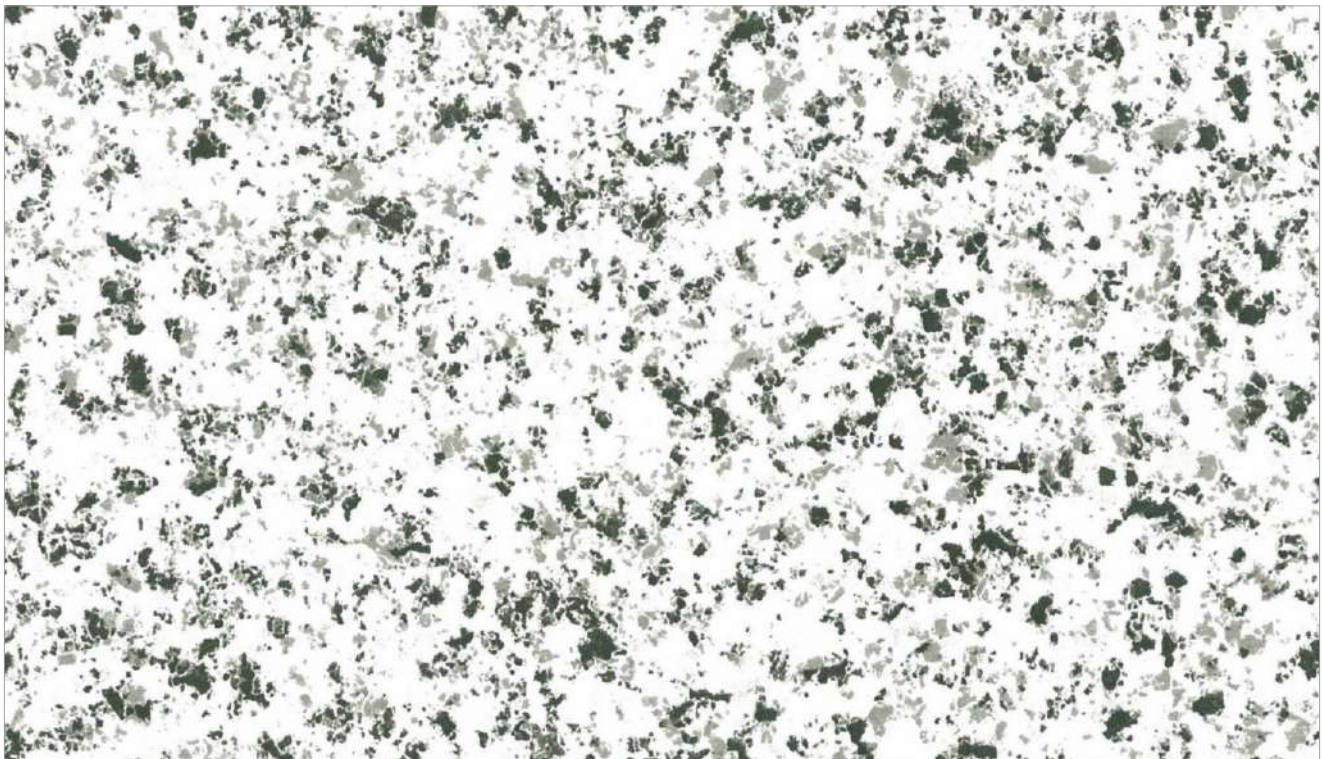


RB - 220 Novacentopine

REYNOBOND GRANITE SERIES



RB - 106 Granville



RB - 108 Quartz Ivory

15 year
warranty

Sheet Thickness:
3mm, 4mm

Coil Thickness:
0.25mm



RB - I09 Venziano Granite



RB - I05 Emperador

REYNOBOND GRANITE SERIES



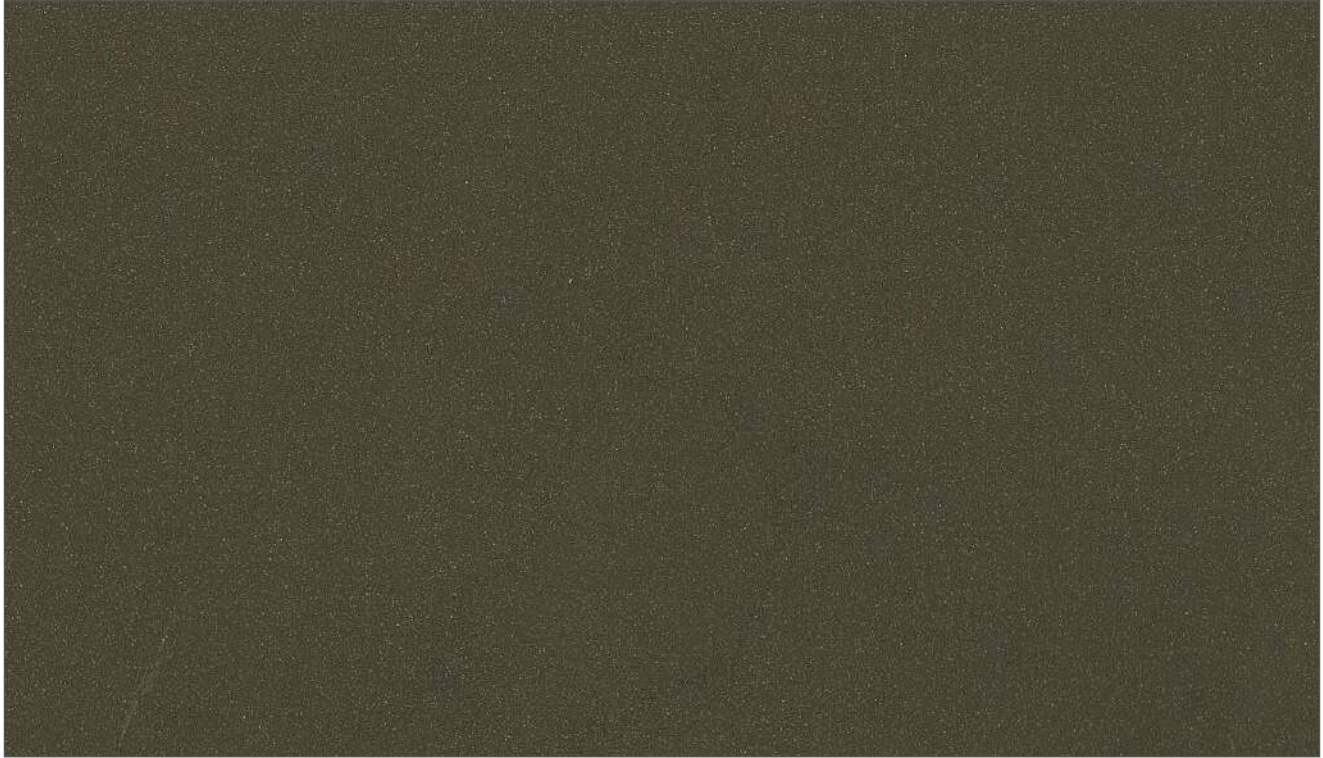
RB - 119 Perlato



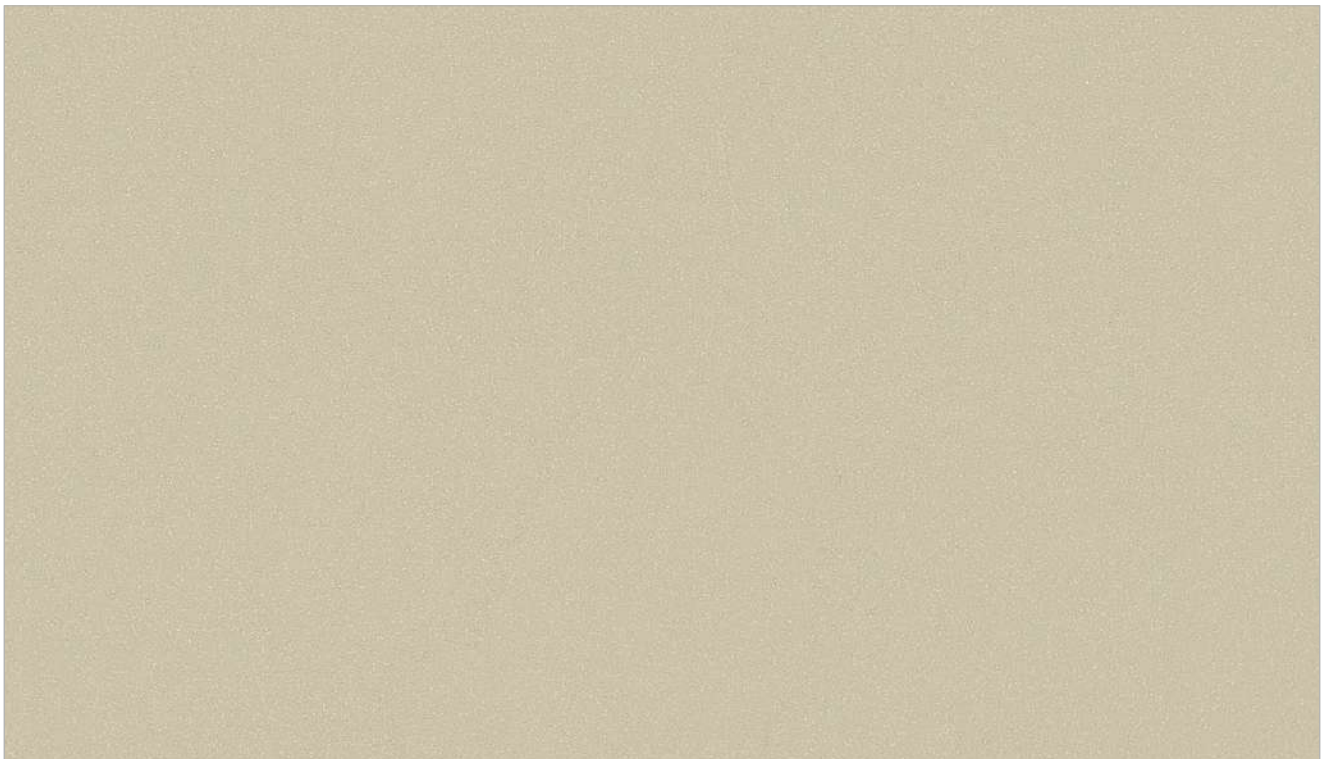
RB - 138 Spot Rustic Grey

Sheet Thickness: 3mm, 4mm | Coil Thickness: 0.25mm

REYNOBOND SAND & SPARKLE SERIES



RB - I25 Multani Magic



RB - I26 Sume Stone

Sheet Thickness: 3mm, 4mm | Coil Thickness: 0.25mm

REYNOBOND SAND & SPARKLE SERIES



RB - 127 Hawaii Sand

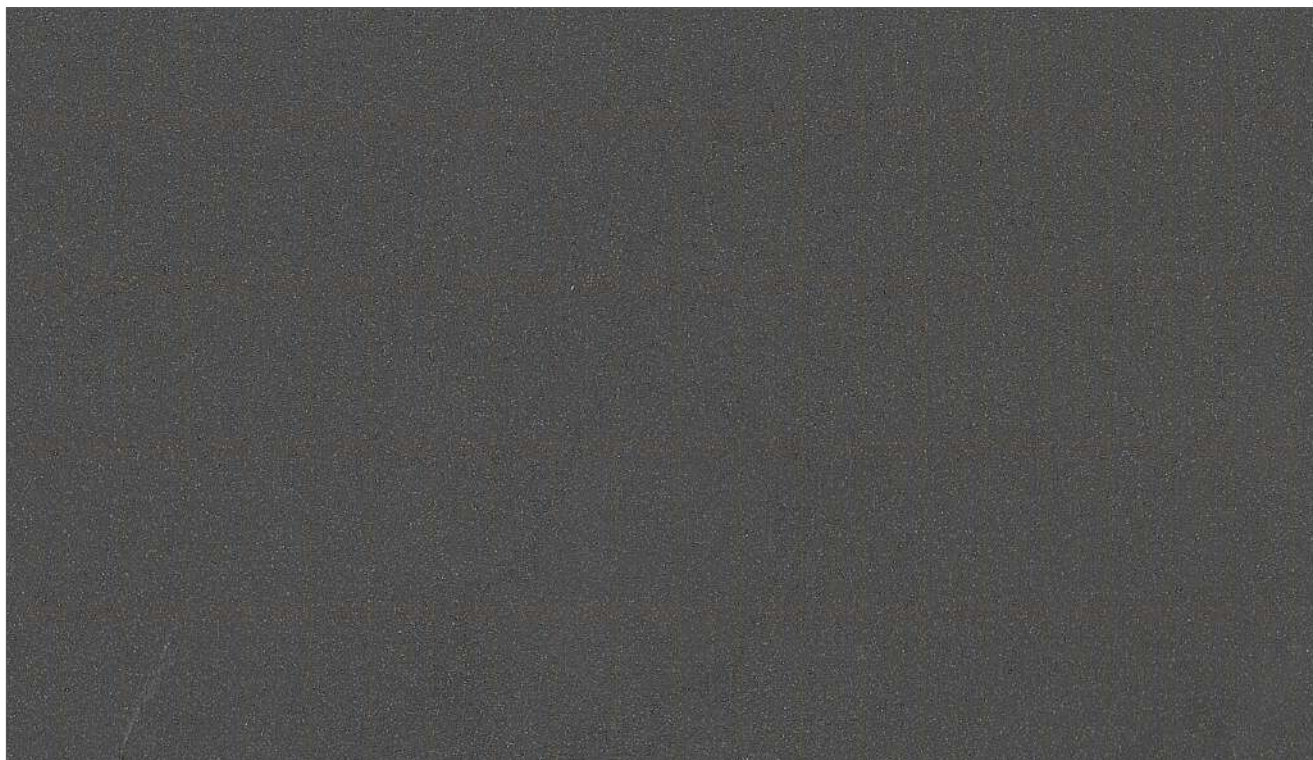


RB - 128 White Sand

15 year
warranty

Sheet Thickness:
3mm, 4mm

Coil Thickness:
0.25mm



RB - I24 Shadow Grey

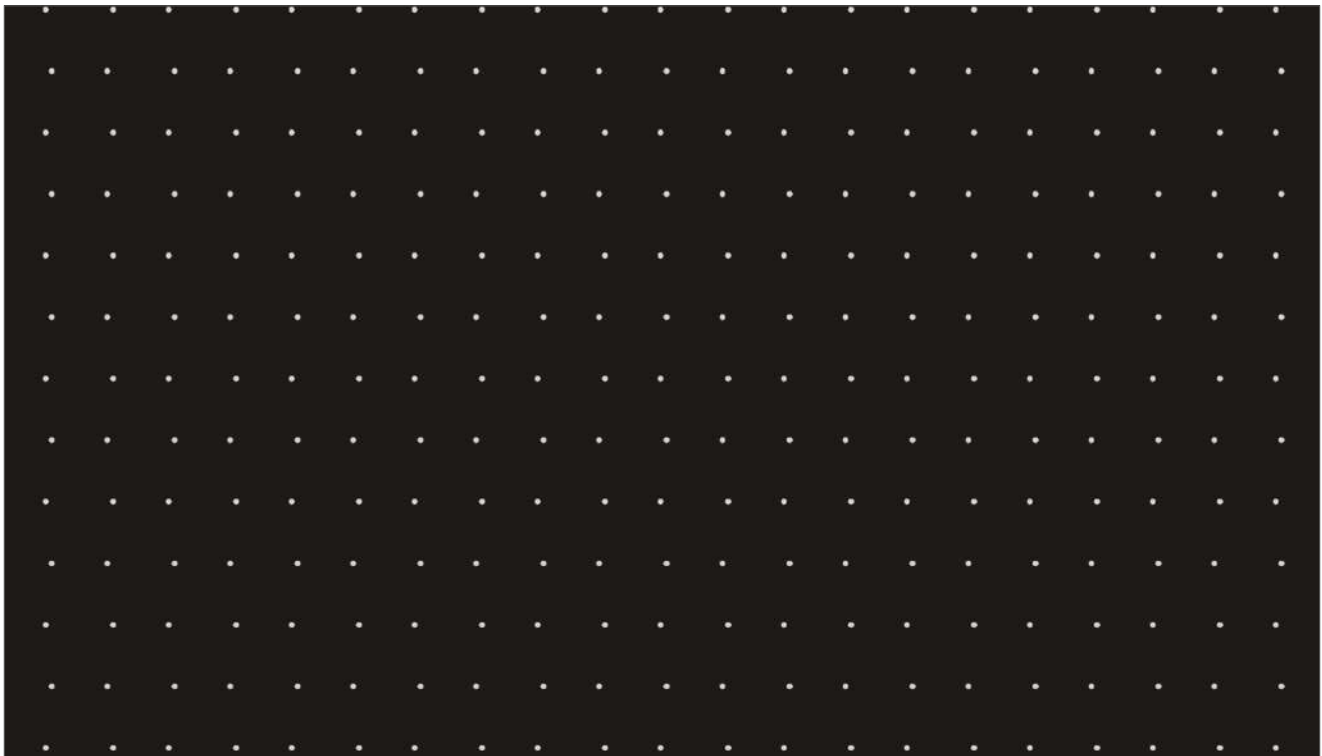


RB - I39 Sparkling Red

REYNOBOND SAND & SPARKLE SERIES



RB - 114 White Metallic Sparkling



RB - 115 Black Metallic Sparkling

Sheet Thickness: 3mm, 4mm | Coil Thickness: 0.25mm

REYNOBOND SOLID & METALLIC SERIES



****** RB-01 Signal Red



***** RB-02 Yellow



***** RB-03 Orange



****** RB-04 Bright Silver



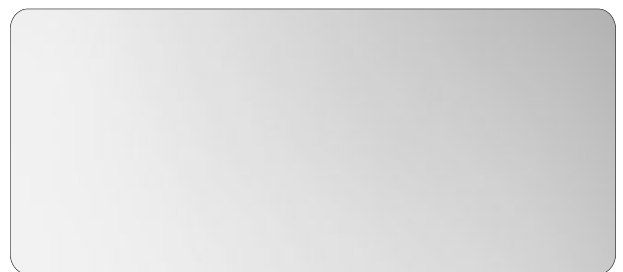
****** RB-06 Champagne Gold



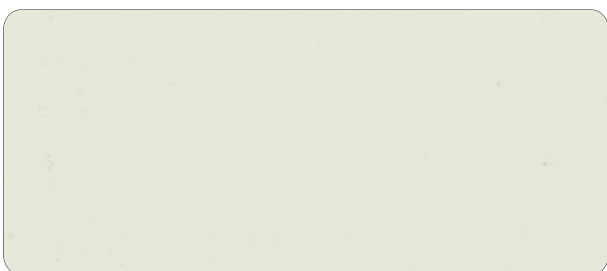
****** RB-07 Metallic Silver



****** RB-08 Bright White



******* RB-09 Mirror (Interior)



****** RB-10 Ivory White



****** RB-11 Dark Blue

Sheet Thickness: 3mm, 4mm | Coil Thickness: *****0.25mm, ******0.50mm & *******Premium

REYNOBOND SOLID & METALLIC SERIES



* RB-12 Light Blue



** RB-13 Blue Silver



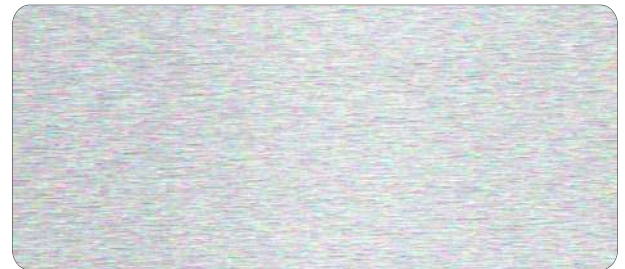
** RB-14 Black Silver



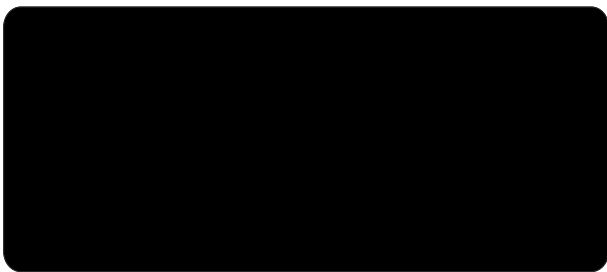
** RB-15 Copper Metallic



* RB-16 Lilac



*** RB-17 Bruch Silver (Interior)



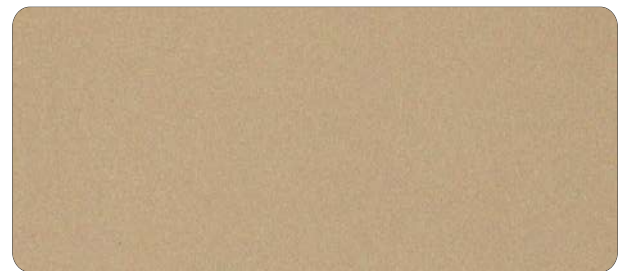
** RB-19 Coal Black



** RB-20 Metallic Bronze



** RB-21 Jade Mettallic



** RB-22 Super Gold

15^{year}
warranty

Sheet Thickness:
3mm, 4mm

Coil Thickness:
* 0.25mm, ** 0.50mm, *** Premium



* RB-23 Ocean Green



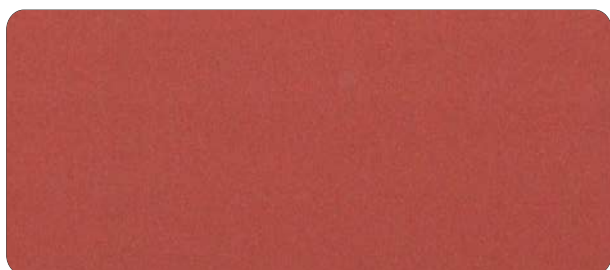
** RB-24 Magic Gold



* RB-25 Traffic Yellow



* RB-26 Brick Red



** RB-27 Wine Metallic



* RB-28 Dabur Green



* RB-29 Rose Metallic



** RB-30 Choco Brown



*** RB-31 Coffee Silver



*** RB-32 S.S. Finish

REYNOBOND SOLID & METALLIC SERIES



*** RB-33 Gloss White



*** RB-34 Golden Mirror (Interior)



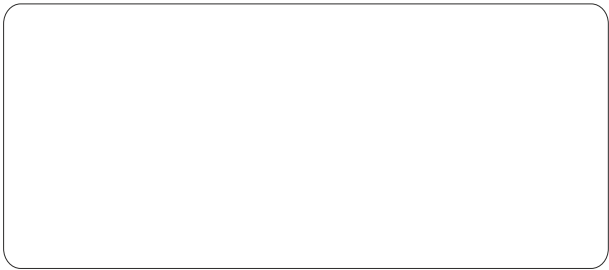
** RB-44 Dark Grey



* RB-45 Sky Blue



* RB-46 Read Gold



*** RB-47 Pure White



*** RB-48 Glossy Red



* RB-03N Traffic Orange



Technical Specifications

Description	Units	REYNOBOND COMPOSITE PANEL	REYNOBOND HPL	STANDARD
Thickness	MM	4.0	6.0	DIN 1784
Total Panel Thickness	MM	4.0	6.0	DIN 1784
Panel Weight	Kg/m3	6.5	7.5	SOP/MECH/01:2019
Sound Transmission Loss	db	26	28	ASTM E 90
Rigidity	kNcm3/m	5994	5994	DIN 53293
Section Modulus	cm3/m	2.84	2.84	DIN 53293
Linear thermal Expansion (at 100° C temp difference)	mm/m/°c	—	2.4	EN 1999-1
Temperature Resistance	°C	(-40) - (+80)	(-40) - (+80)	SOP/MECH/01:2019
Bonding Strength	N/mm2	7.4	13.0	ASTM C 1363
Fire Retardant		Class B1	Class B1	DIN 4102.1
Heat Transition Coefficient	W/m2K	5.38	5.38	ASTM C 1363

ALUMINIUM SHEET PART (ALUMINUM ALLOY 1100 - AIMG1)

Sheet Thickness	mm	0.5	0.25	DIN 1784
Tensile Strenght	N/mm2	155.0	144.0	ASTM E 8
0.2% Proof Strength	N/mm2	124.0	120.0	ASTM E 8
Bending Strength	N/mm2	92.0	92.0	ASTM E 8
Modulus of Elasticity	N/mm2	72000	70208.0	ASTM E 8

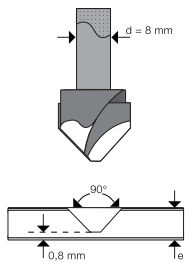
COATING PART

Coating	—	PVDF	LUMIFLON	—
Lacquered - PVDF	—	Material coating identified PVDF (as polyvinylidene Fluoride)		
Coating Thickness	µm	30	30	ASTM D 7091
Gloss at (160°)	%	30	34	ASTM D 523
Pencil Hardness	HB	4H	F	ASTM D 3363

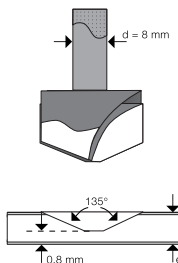
Fixing Method

(Recommendation)

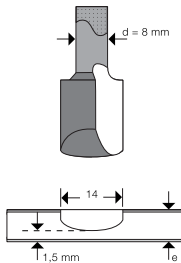
Routing



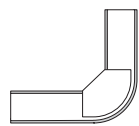
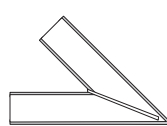
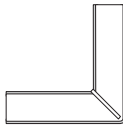
Milling cutter for 90° V-shaped groove



Milling cutter for 135° V-shaped groove

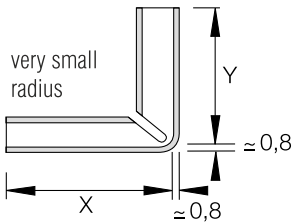
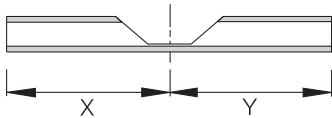


Milling cutter for concave groove

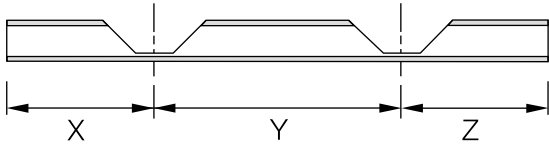


Shape - Perpendicular

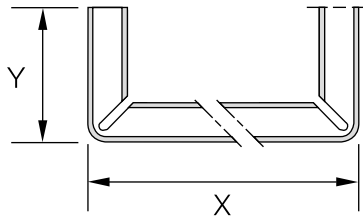
L shape



Tray shape

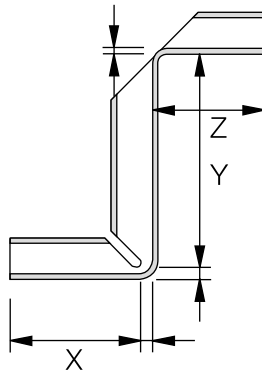
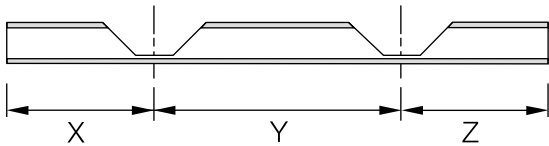


panel or pan dimension



panel or pan dimension + 1/16"

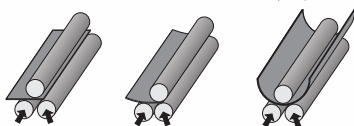
Z shape



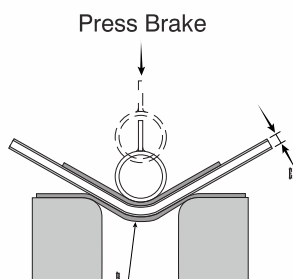
route the same side for either bend

Shaping Circular

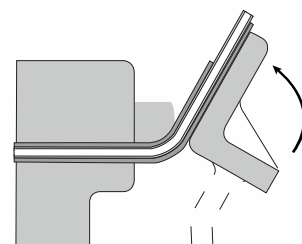
for seamless
circular bending



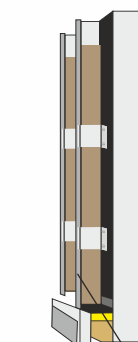
Pyramid roller



bending die (shaker)

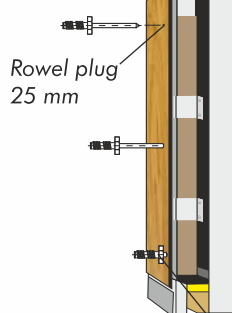


Black Paint on Plastered Wall



Aluminium Section
25mm x 50mm x 1.6mm

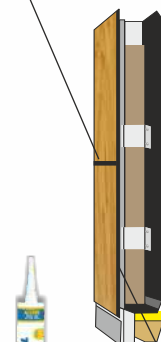
Aluminium angle (cleat)
19mm x 19 x 2mm



Rowel plug
25 mm

With Rivets (powder coated)
SS 25" (star headed)

Gap between panel
(3-6mm)



Without Rivets
(ALSTONE STIX-ALL)

Fixing Detail (with Rivets)

- Black Paint on Plastered Wall.
- Fix aluminium section on wall, maintain gap of 400 - 700mm center to center with help of cleat vertically.
- Pilot hole must be pre- drilled before fastening rivets tight.
- Size of rivets must be three times the thickness of panel and gauge of aluminium. Ensure rivets used are fully threaded.

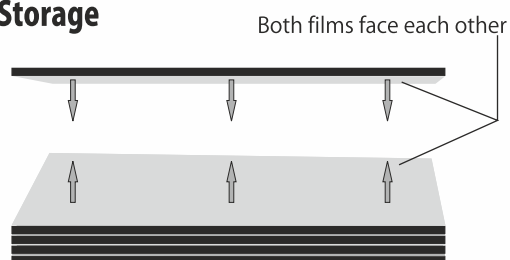
Fixing Detail (without Rivets)

- Slightly rub off the surface of aluminium section & portion of plank with the help of sand paper before apply **ALSTONE STIX-ALL** Adhesive on it.
- Don't use any silicon in gap filling.
- Maintain the minimum gap of 3mm to 6mm in between the Planks.

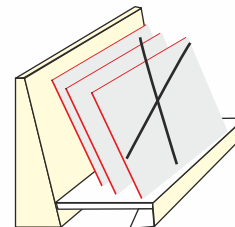
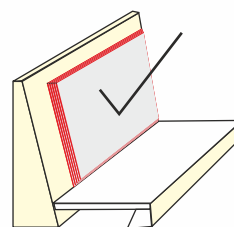


Fixing Detail

Transport, Handling & Storage



Both films face each other



REYNOBOND HPL Exterior panels should be handled with care in order not to damage the edge and surface of the high-quality material. REYNOBOND HPL Exterior cladding panels must be secured against slippage during transport. when loading or unloading, the panels must be lifted. Do not push or pull them over the edge. Remove the Film within 45day after Installation of Panels. All panels must be stacked horizontally on flat, stable supports and supporting panels. the goods must lie completely flat. Incorrect storage can lead to permanent deformation of the panels.

15 year warranty

REYNOBOND®

COMPOSITE PANELS

Reynobond India

HEAD OFFICE

2E/7, Jhandewalan Extension,
New Delhi - 110055

Tel : 011-42307700 | +91-9810846953

E: info@reynobondindia.com

Branch Offices:

Ahmedabad • Bangalore • Bhubaneswar • Chennai • Delhi
Hyderabad • Indore • Kochi • Kolkata • Lucknow • Noida
Patna • Pune • Raipur • Ranchi.

Channel Partner



Composite Panels | Wood Polymer Composite | Silicone Sealants